



# Public Square Garage

350 Deaderick St, Nashville, TN 37201

## Retail Situated Under Largest Garage in Nashville's Urban Core

### BUILDING DETAILS

#### Property Overview

<b>Total Retail Size</b>	40,965 sq. ft.
<b>Parking Garage Size</b>	1,069 Spaces
<b>Stories</b>	2 Commercial
<b>Walk Score®</b>	91 (Walker's Paradise)

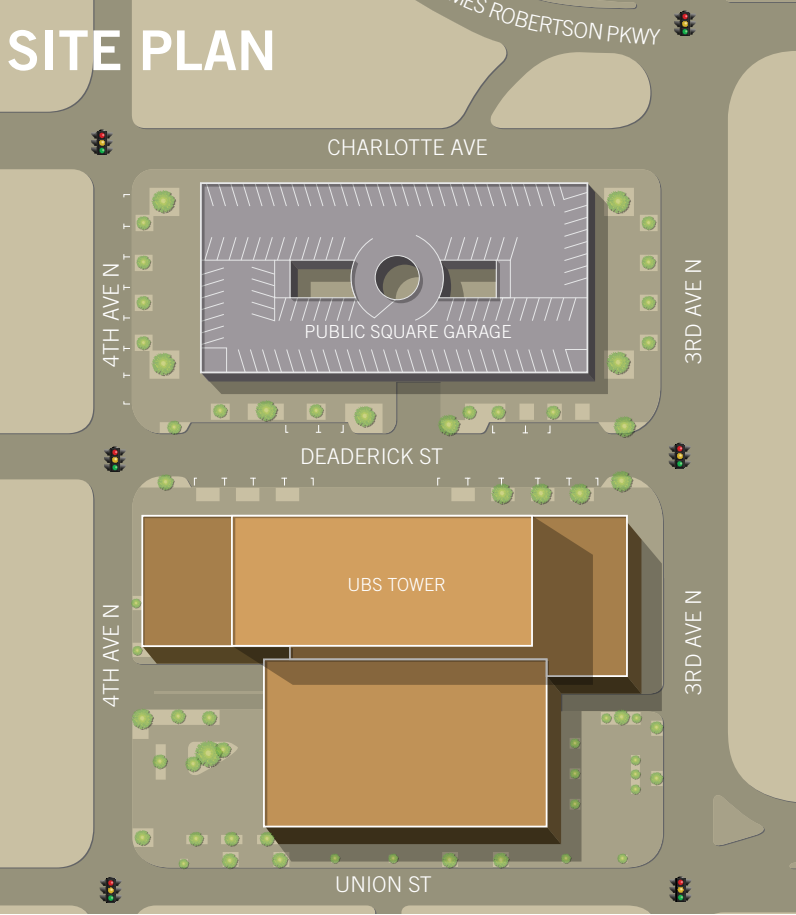
#### Space Available

1,684 sq. ft. - 11,345 sq. ft.

#### Key Features

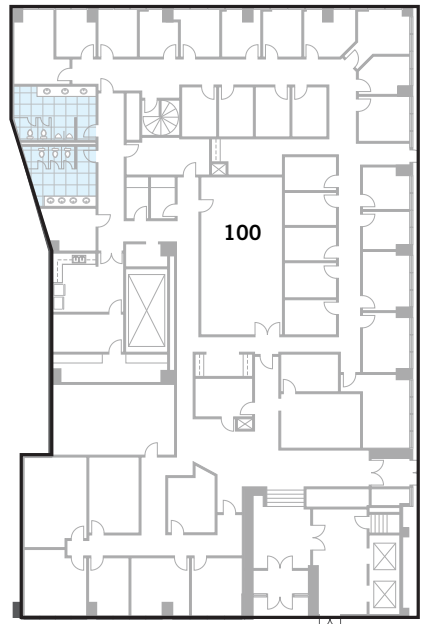
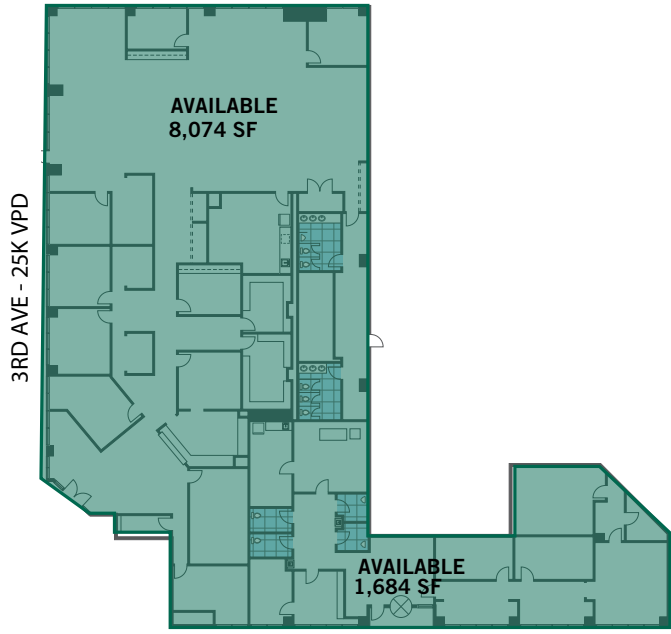
- Convenient access to Downtown amenities & major entertainment venues including: Titans Stadium, Bridgestone Arena, Nashville Municipal Auditorium
- Public Square Garage is situated in the heart of the city with more than 20,000 daytime employees within 1/4 of a mile each day
- Five new luxury boutique hotels within a one-block radius (Boutique Row) totaling 740 new rooms
- Strong accessibility to Interstates 40/24/65 via James Robertson Parkway (28,000 VPD) and Charlotte Avenue (29,000 VPD)
- Nashville was recently touted as the new "IT" city by the New York Times, attracting a young creative class of well educated and highly skilled workforce looking for the live, work, play environment





CHARLOTTE AVE - 8K VPD

### STREET LEVEL RETAIL

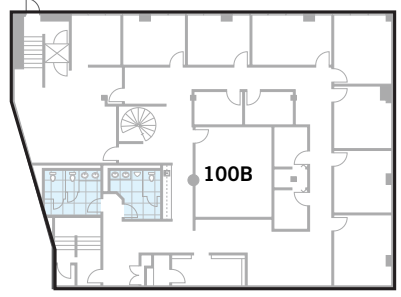
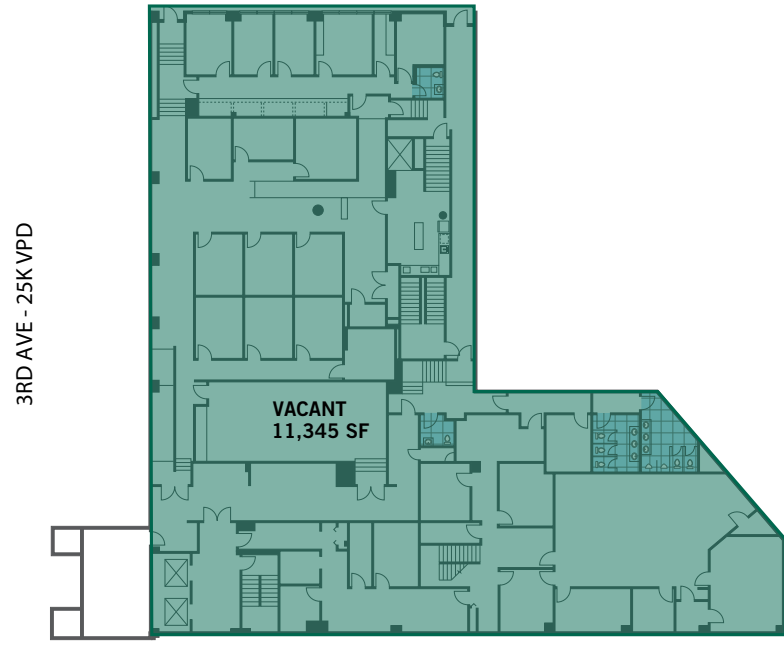


DEADRICK ST



CHARLOTTE AVE - 8K VPD

### BASEMENT LEVEL RETAIL



DEADRICK ST



